

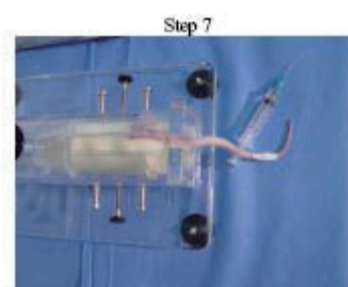
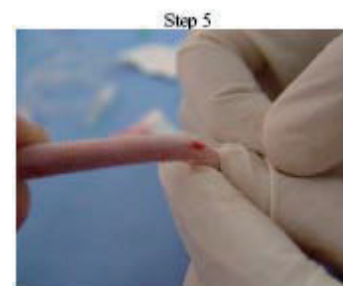
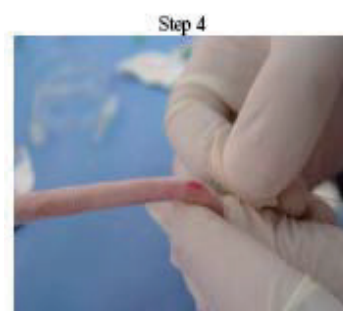
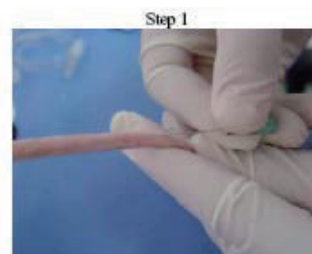
MTV-1 Tail Vein Procedure for Short Term Implantation:

Materials Needed:

1. Short term tail vein catheter
2. Medical tape ½"
3. Cyanoacrylic adhesive
4. Restraint cone
5. Tongue depressor or pop-cycle stick (optional)
6. Saline or flushing solution

Implantation procedure:

1. Place the animal in a restraint cone
2. Tape the tail to the tongue depressor or pop-cycle stick if desired
3. Warm and prep the tail according to your SOP's
4. Open catheter package
5. Prime the catheter with 0.9% saline or desired solution. Place a syringe over the stylette onto the attached hub and inject slowly. It will be a hard push due to the stylette in the 28g catheter so inject slow.
6. Starting in the lower half of the tail place just the bevel of a 23G needle into the tail vein. Placing only the bevel into the vessel will lower the trauma to the vessels. The needle is only used to make a small nick or hole in the vessels in order to advance the catheter. Once blood is verified, insert the catheter into the hole that was made using the needle, and advance slowly.
7. If the catheter advances easy then you are certain that the catheter is in the vessel.
8. Advanced the catheter approximately 2cm into the tail vein.
9. Immediately apply pressure to the catheter where it exits the tail and pull out the stylette.
10. At this point a small drop cyanoacrylic (super glue) adhesive and piece of tape can be placed over the catheter and exit site to provide stability and prevent back flow.
11. Dose your compound slowly.
12. Flush the catheter and tail vein with 0.9% sodium chloride or desired solution.
13. When finished dosing and flushing remove the catheter from the tail and apply pressure to stop any bleeding.
14. Return animal to cage.



バイオリサーチセンター株式会社

www.brck.co.jp sales@brck.co.jp

本	社：〒461-0001 名古屋市東区泉二丁目 28-24 (東和高岳ビル4F)	TEL(052)932-6421	FAX(052)932-6755
東	京：〒101-0032 東京都千代田区岩本町一丁目 7-1 (瀬木ビル2F)	TEL(03)3861-7021	FAX(03)3861-7022
大	阪：〒532-0011 大阪市淀川区西中島六丁目 8-8 (花原第8ビル)	TEL(06)6305-2130	FAX(06)6305-2132
福	岡：〒813-6591 福岡市東区多の津一丁目 14-1 (FRCビル6F)	TEL(092)626-7211	FAX(092)626-7315
仙	台：〒983-0023 仙台市宮城野区福田町3-6-18 (あさのコーポ104)	TEL(022)786-1411	FAX(022)786-1412